






Instructions

1. Unpack the contents of your order and gather the tools you'll need:

If you have a hard plaster wall, you will also need a drill.

 4x3 Paper Template	 20 Foam Spacers	 13 Pegs	 12" Painter's Tape	 1 Tape Measure
--	---	---	--	--

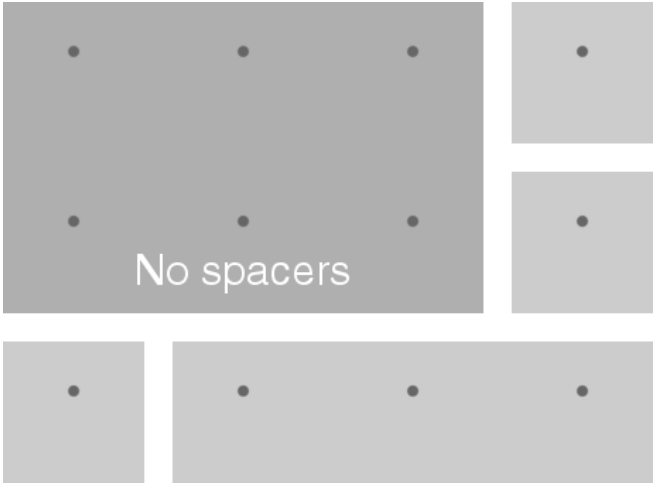
2. Cozy up to the wall with your web browser and visit:

 wallcollages.com/install/34

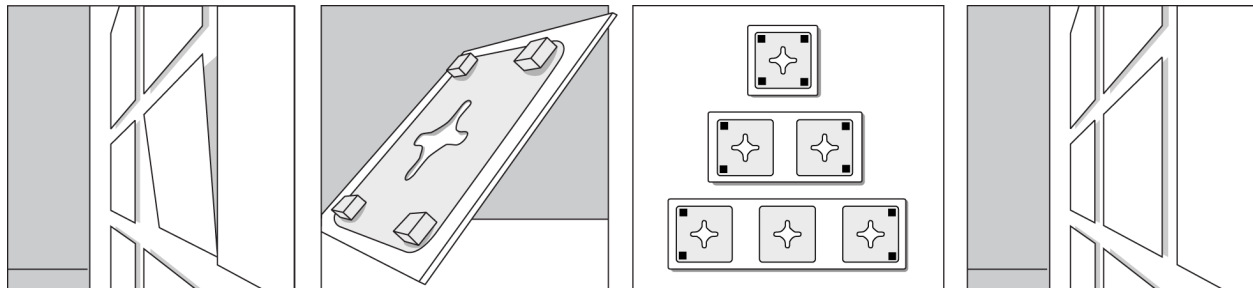
3. Follow the step-by-step directions online.

You will install a **4 x 3** grid of pegs.

The display will cover a **2' x 1½'** area of the wall.



Note: The foam spacers are only for the small 5x5, 5x11 and 5x17 panels.



Unless you do this step, some panels will flop about and hang at an angle.

To the panels that span 1, 2 or 3 pegs, attach adhesive foam spacers to the back corners as shown above – on the paper.

Now these panels will hang parallel to the wall and hold tight.